

Bartlettina

Bartlettina sordida

Family

Asteraceae (daisy)

Also known as

Eupatorium sordidum, *Neobartlettina sordidum*

Where is it originally from?

Mexico

What does it look like?

Erect shrub (<2 m), woody at base, with stems covered in reddish-purple striped down. Densely-hairy leaves (11-25 x 8-25 cm) are opposite. Fluffy, purplish-pink flowers (Nov-Jan) are followed by tiny, husky seeds.

Are there any similar species?

Plectranthus grandis, *P. ecklonii*, and *Roldana petasitis* are all similar.

Why is it weedy?

Produces many well dispersed seeds, is partially shade tolerant and prefers dampish sites but can tolerate some drought once established.

How does it spread?

Wind spreads the seeds. Gardens, dumped vegetation and contaminated soil are all sources of new infestations.

What damage does it do?

Limited damage as it occupies forest edges, inhibiting regeneration.

Which habitats is it likely to invade?

Lowland forest margins, regenerating and disturbed bush, especially in warmer areas.

What can I do to get rid of it?

1. Pull or dig out (all year round): Leave on site to rot down.
2. Spray (all year round): glyphosate (10ml/L) or metsulfuron-methyl 600g/kg (2g/10L (knapsack) or 15g/100L (handspray gun)). Penetrant recommended.
3. Cut down and paint stump (all year round): glyphosate (250ml/L) or metsulfuron-methyl 600g/kg (1g/L).

CAUTION: When using any herbicide or pesticide, PLEASE READ THE LABEL THOROUGHLY to ensure that all instructions and directions for the purchase, use and storage of the product, are followed and adhered to.

What can I do to stop it coming back?

Resprouts after slashing. Easy to manage. Seedlings do not compete aggressively for space. Replant bared areas to prevent seedlings.



www.weedbusters.org.nz

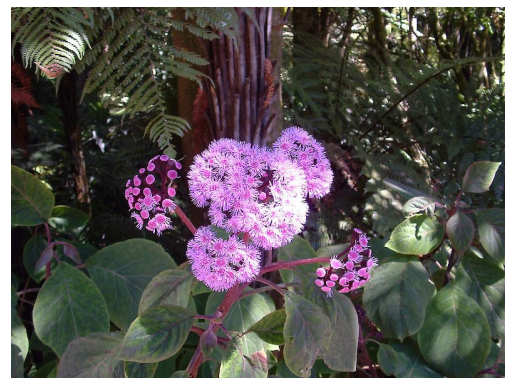


Photo: Carolyn Lewis

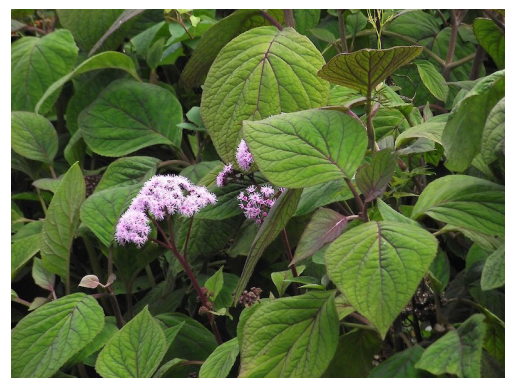


Photo: Carolyn Lewis

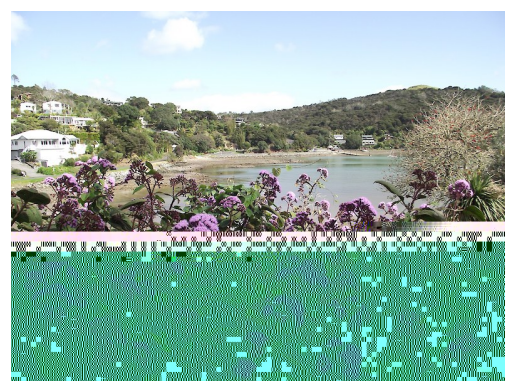


Photo: Carolyn Lewis